

The Berkshire BioBlitz is proudly presented by the Berkshire Museum, in partnership with MCLA STEM Pipeline, Berkshire Environmental Action Team (BEAT), Massachusetts Department of Conservation and Recreation (MA DCR) and:

Berkshire Natural Resources Council
 City of Pittsfield
 Hoffmann Bird Club
 MA Association of Conservation Commissions
 MA Division of Fish and Wildlife
 MA Natural Heritage and Endangered Species Program

MCLA Environmental Studies Program
 New England Tropical Conservancy
Northern Woodlands magazine
Orion magazine
OurBerkshire Green magazine
 Pittsfield Public Schools
 The Trustees of Reservations

For more information:

Scott LaGreca, Natural Science Coordinator
 Berkshire Museum, 39 South Street
 Pittsfield, Massachusetts 01201
 Telephone: (413) 443-7171 ext. 17
 Email: slagreca@berkshitemuseum.org

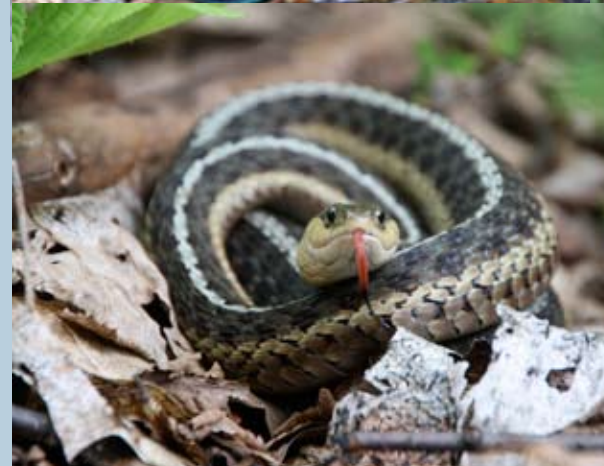
For further details go to: www.berkshitemuseum.org



Berkshire BioBlitz

June 4-5, 2010

Activities Guide



A MACC Biodiversity Day event

What is a BioBlitz?

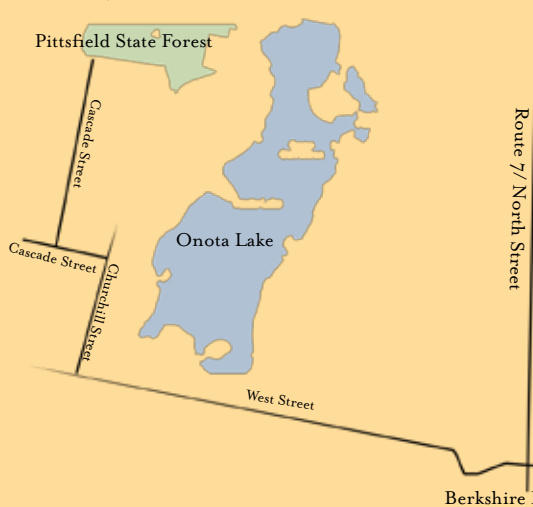
A BioBlitz (a.k.a. Biodiversity Day) is an action-packed day designed as part scientific endeavor, part contest, part environmental festival, and part educational program. During a BioBlitz scientists come together in a race against time to count as many species as they can in a given area over a 24-hour period. The first 24-hour biological survey took place in Walden Woods, Massachusetts in 1998. Its success has since inspired similar events in many states and dozens of countries.

2010 has been declared the “International Year of Biodiversity” by the United Nations. In celebration, the Berkshire Museum and its partners have organized the Berkshire BioBlitz, the first major biological survey of its kind in Berkshire County. It happens on June 4th and 5th in the Pittsfield State Forest, located only five miles from downtown Pittsfield, Massachusetts.

A BioBlitz increases the public’s awareness of the variety of life in their immediate area, and the importance of that diversity. The word “biodiversity” is often used to refer to rainforests with their vast number of species, while the diversity of life in our own backyards is phenomenal. We may take for granted clean water, fertile soil, and clean air to breathe. Yet these resources are the result of a healthy ecosystem supported by local plants and animals. What better way to address this topic than to share in 24 hours of discovery, and experience the vast array of species that can found in just one day?

A BioBlitz is an excellent tool to excite both children and adults about science. During these events, biologists from many disciplines have the rare opportunity to share their passions with people of all ages who will work side-by-side toward a common goal.

Come join us in the forest!



Directions from downtown Pittsfield:

From Park Square, go west on West Street for 2.7 miles.

Turn right onto Churchill Street and continue for 0.7 miles.

Turn left onto Cascade Street and continue for 0.3 miles.

Stay right to continue on Cascade Street. The entrance to Pittsfield State Forest is 1.1 miles on the left.

All events are free and held at the Pittsfield State Forest, and are weather-permitting. Check the forecast, and dial our weather contingency hotline (413) 443-7171 ext. 35, before setting out! For details go to berkshitemuseum.org

Schedule

Friday June 4th

- At noon: *BioBlitz begins!*
Scientists will begin to inventory insects, plants, fungi, mammals, birds, amphibians and reptiles in Pittsfield State Forest.
The public is welcome to come observe and interact!
- 7:30 p.m.: *Welcoming Ceremony* (Amphitheater)
- 8 p.m.: *BioBlitz World Music Drum and Song Campfire Jam* (Amphitheater)
Musician/naturalist Aimee Gelinias (Tamarack Hollow) invites you to join her in songs and rhythms from around the world that honor the earth.
- Begins 8:30p.m.: *Firefly Watch* (Bishop Field)
Come learn how to become a Firefly Watch citizen scientist with Berkshire Museum biologist Scott LaGreca, and report on the evening’s first flashes!
- Begins 9 p.m.: *Moth Light* (Bishop Field)
Get an up-close view of moths and other night-flying insects as they are drawn to a lighted sheet. Mark Mello (Lloyd Center for the Environment) will sort out the species and provide hints on identification.
- Owl Prowl* (meet at Ski Lodge)
Are you a “night owl”? Join naturalist Rene Wendell (Conservation Ranger at Bartholomew’s Cobble) “on the prowl” and search the forest for nocturnal animals, with a special focus on owls.

Saturday June 5th

- Begins 9 a.m.: *Fitness Hike* (meet at Ski Lodge)
Join physical educator and naturalist Holly Brouker (Holly All Sports) for a morning of energized hiking using breath and foot techniques while immersed in the natural environment. Limited to the first 15 hikers.
- Bird Walk with Hoffmann Bird Club* (meet at Ski Lodge)
Enjoy a leisurely walk through a variety of bird habitats with Berkshire County’s long-established bird club (they celebrate 70 years this year!). Limited to the first 15 hikers.
- 10:30a.m.: *Alien Invaders: the Asian Longhorned Beetle* (Ski Lodge)
Come listen as environmental activist Jane Winn (BEAT) tells us about the recent Asian Longhorned Beetle infestation in Worcester, MA, and learn how you can protect our lovely Berkshires from this invasive species.
- Noon: *Species Tallies and Closing Ceremony* (Ski Lodge)

Be sure and check out the *MCLA STEM Pipeline Family Day* from 9 a.m. to 2:30 p.m., also on Saturday at Pittsfield State Forest. For details go to mcla.edu/berkshirebioblitz