

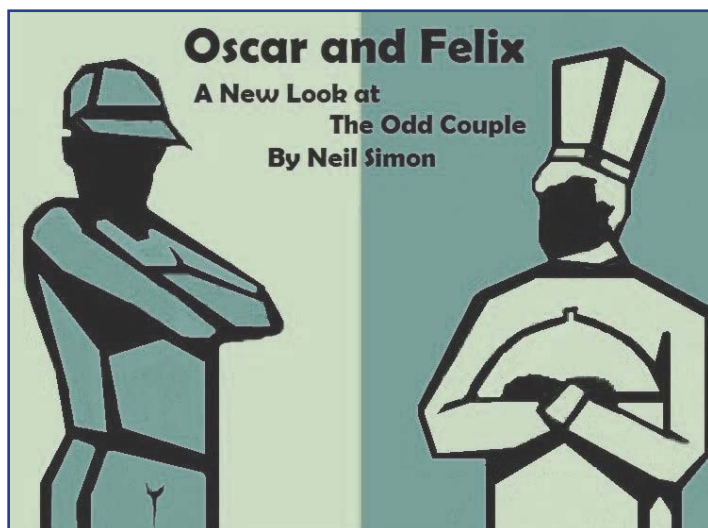
Faculty Center

A newsletter for faculty and librarians

March 2014

The Faculty Center at MCLA, Vol. 2, No. 8

Calendar



Feb. 26–March 1 Neil Simon's *Oscar and Felix*, Spring Mainstage, Venable Theatre, directed by Doug Jenkins, 8 p.m. (March 1 at 2 p.m.)

Feb. 26—Adjunct Faculty Luncheon, day and evening faculty invited, Faculty Center, 12–1.

Feb. 26—Screening of Nightline's profile of Gloria Steinem, Karen Cardozo and Petra Hejnova discussion leaders, Murdock 218, 7 p.m.

Feb. 27—"Inside the Outside: Reconsidering Our Views About Art" opens at Gallery 51 on Main St. Area artists Jessica Park, Ilene Spiewak, Charlie Lucas and others. Book signing by Tony Gengarely of his new biography on Jessica Park. Reception, 5–7 p.m.

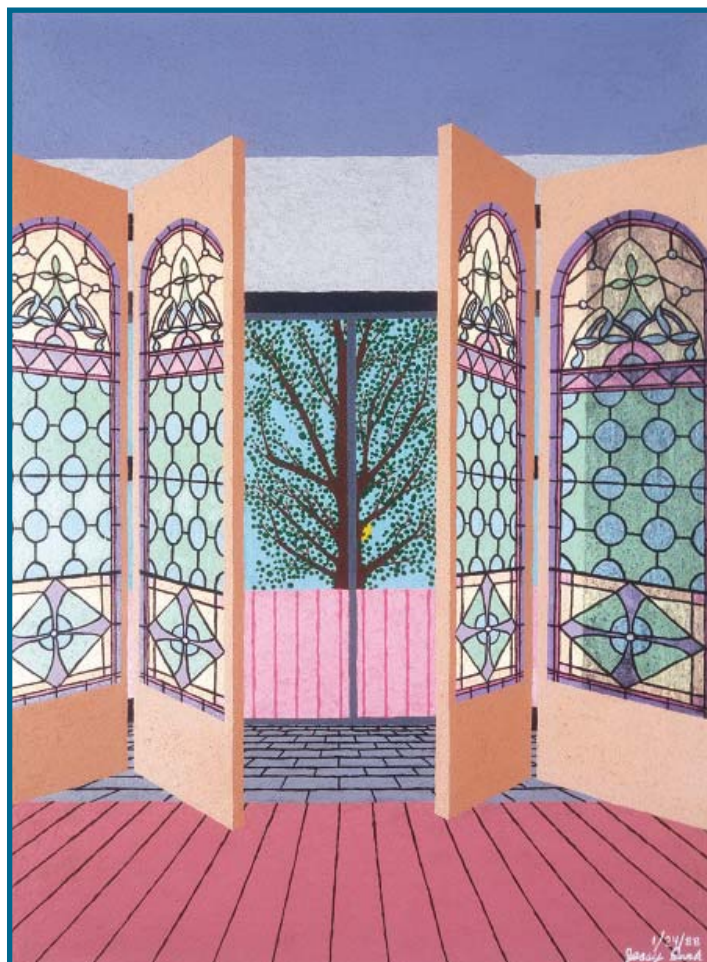
Feb. 27—"Sustainable Food Systems" on College Campuses, Green Living Seminar panel discussion, Murdock 218, 5:30 p.m.

March 4—Teaching Roundtable: Diverse Classroom—Mental Health & Addictions, Coffee/tea, Faculty Center, 9:30 a.m.

March 4—Gloria Steinem, writer, lecturer, activist, Public Policy Lecture, Church St. Center, 7 p.m.

March 5—Diversity Teaching Roundtable repeats on

Continued on page 2



Great Stained Glass Doors by Jessica Park

'Inside the Outside'—exhibit of six area artists' work opens Feb. 27, Gallery 51

The title of the exhibit opening Thursday at Gallery 51 is "Inside the Outside: Reconsidering Our Views About Art," and this major show by Berkshire artists will challenge and delight viewers with its vigor and vibrancy.

Directed by Art Professor Tony Gengarely and curated in a joint project of students in his Museum Studies class and Gallery 51, the exhibit runs through March 23.

Included are a range of area artists: Renee Bouchard, Danielle Christensen, Charlie Lucas, Michael McManmon, Jessica Park, and Ilene Spiewak.

Included in the 'Inside the Outside' art program are two evening discussions at Gallery 51. On March 18 Jamie Frankl



Gloria Steinem

Continued on page 2



Monk 2011 by Renee Bouchard

Calendar continued

Wednesday, coffee & dessert, Faculty Center 1 p.m.

March 5—Reception for Tony Gengarely's new biography, *A World Transformed: the Art of Jessica Park*, Faculty Center, 6:30 p.m.

March 6—Twitter in the Classroom? Graziana Ramsden shares her experience, Faculty Center, 10 a.m.

March 18—Art and Biography, Evening Discussion: Jamie Franklin, Bennington Museum Curator, Gallery 51, 5 p.m.

March 20—Artist Ilene Spiewak, *Art Education and the Education of the Artist*, Gallery 51, 5 p.m.

March 20—Public Higher Ed Commissioner Richard Freeland will meet with faculty to dialogue on the Vision Project and other issues in higher education, Faculty Center, 3 p.m.

'Inside the Outside' continued

in, curator of the Bennington Museum, will present "Art and Biography."

On March 20 Ilene Spiewak, artist, art therapist and art teacher for the College Internship Program, will present "Art Education and the Education of the Artist." Both events run from 5–7 p.m.

The exhibit will also feature the release of Tony Gengarely's new biography of Jessica Park.

Teaching Roundtable—Diverse Classroom, March 4 & 5

The third Teaching Roundtable (TR) in the Diverse Classroom series will be held Tuesday and Wednesday, March 4 and 5 in the Faculty Center.

We will focus on the classroom experience relating to students with mental health and addictions issues. Heidi Riello, director of the Counseling Center, will join us for the Tuesday morning discussion at 9:30 a.m., and in the repeat session on Wednesday at 1 p.m.

Please join us in the Faculty Center to share your experiences and learn more about the role Counseling Services plays in support of our students. Coffee, tea and breakfast rolls or dessert will be served.

The Teaching Roundtables are open to all faculty, full and part time.



Abilities and Disabilities

Our February TR focused on teaching students with diverse abilities and disabilities. Suzanne Hunger, associate dean for CSSE programs, and Katie Sutton, learning specialists met with faculty to explore how to enrich the classroom experience for students with physical, mobility, neurological and sensory conditions.

Suzanne and Katie also advised on how best to work with CSSE services, those with accommodations and those who may self-report conditions that affect their learning ability. Katie encouraged faculty to refer students who self-report conditions

'If what we do helps those with disabilities, it also helps everyone.'

true both as a teacher and a learning specialist: If what we do helps those with disabilities, it also helps everyone. This is true whether accommodating for mobility limitations, or for those with sight or hearing difficulties.

Several professors reported feedback from students about hearing difficulties in classrooms. In many classrooms—especially in Venable, but also in Murdock—the noise from heating/cooling systems is a problem for both students and teachers. In summer and fall, outside noises like lawn mowers and leaf blowers are disruptive.

One person asked if more surround-sound systems could be created in classrooms.

The discussion also turned to student learning styles, not only for those with hearing or sight limitations, but also for students who benefit from a variety of teaching modes and styles.

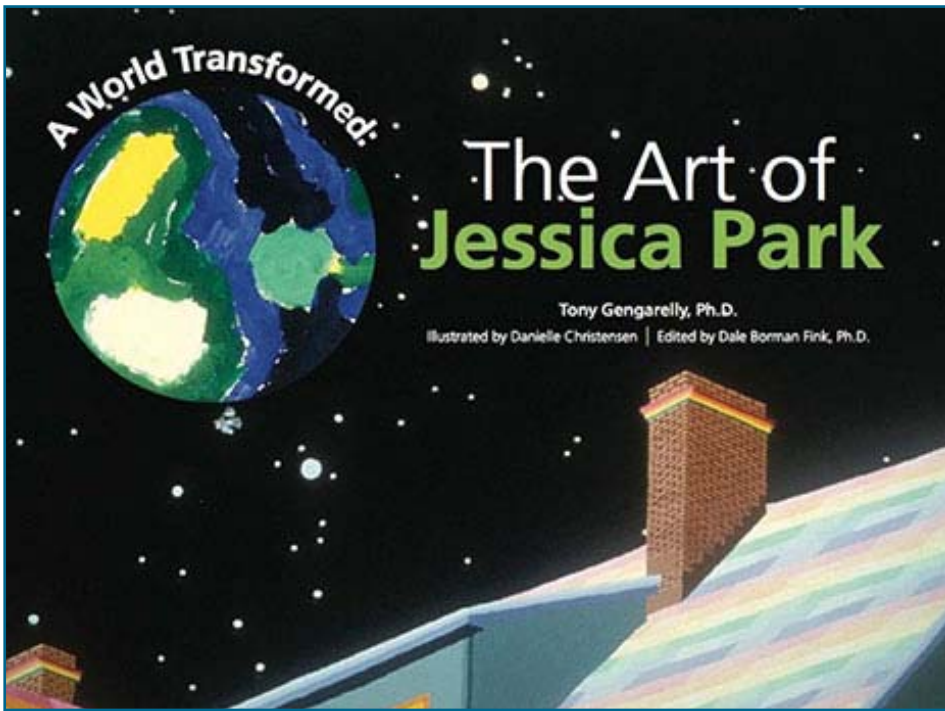
One member commented that if we only use auditory modes in the classroom, we are "privileging those who learn best from auditory instruction," while not addressing the needs of those who would benefit from visual modes.



Looking in the Mind and Seeing the Spirit
Painting by Charlie Lucas

Conclusion: Increased awareness and understanding of students' abilities and disabilities, and good working relationships with support services such as CSSE, can make the classroom experience better for students, and increase our effectiveness as teachers.

— Ben Jacques



Cover of *A World Transformed: the Art of Jessica Park* by Tony Gengareilly.

Reception for Gengareilly's biography of Jessica Park on March 5 in the Faculty Center

Join friends and colleagues March 5 at 6:30 p.m. in the Faculty Center to celebrate Art Professor Tony Gengareilly's new biography of Jessica Park.

The 48-page book is illustrated by Danielle Christensen and edited by Education Professor Dale Fink. It includes reproductions of Park's early work, as well as paintings done more recently. Brilliant in color and intriguing in design, her paintings have drawn international acclaim for their originality and vitality.

A World Transformed tells the story of an artist with unusual ability. Although the book is intended for young readers, it can be enjoyed by everyone.

A Williamstown artist, Jessica Park is largely self-taught, but has benefited from the intervention of several art teachers and the support and guidance of her family. Jessica's Park's lifelong struggle with autism has been transformed through her remarkable art.

Writes Gengareilly: "Colors and shapes organize her world and inspire her paintings. Personal 'enthusiasms' motivate her sensibility. Her sense of composition, drawing skill, and attention to detail help to realize her intentions. Art and autism work together to form a unique vision, which this compelling narrative presents through many images of Jessica's work, along with family photographs and insightful illustrations by Danielle Christensen (MCLA 2011)."

Jamie Franklin, Bennington Museum curator, has commented: "Prof. Gengareilly has given us a gift in this book, providing a rich, full understanding of Jessica Park and her art. As Gengareilly makes clear, the fact that Park has autism doesn't define her or her art, but it is integral to a full understanding of her powerful artistic voice. Never slipping into the stereotypes that so often afflict the analysis of artists with so-called 'disabilities,' Prof. Gengareilly shows us how Park has taken what would typically be seen as insurmountable obstacles and turned them to her advantage."



Twitter in the Classroom? Ramsden to present Twitter as a language learning tool on March 6

Do you use Twitter in the classroom? Or as an instructional tool in your courses?

Modern Languages Professor

Graziana Ramsden will share how she uses Twitter as a tool for students learning another language in a Faculty Center presentation Thursday, March 6 at 10 a.m.



Graziana writes: "Twitter is a very effective capture tool, and it is unmatched for facilitating dialogue among students in the target language. Conversations recorded on Twitter can be archived for future use as well."

She will also present this topic on March 29 at the *Northeastern Council on Teaching of Foreign Languages in*

To learn more about using Twitter as a learning tool, come to the Faculty Center on March 6 at 10 a.m.

Faculty Center

Advisory Board

Lisa Donovan
 Michele Ethier
 Petra Hejnova
 Ely Janis
 Melanie Mowinski
 Nancy Ovitsky
 Graziana Ramsden
 Gerol Petruzella
 Dana Rapp
 Adrienne Wootters
 Jennifer Zoltanski

Ben Jacques,
 Program director & editor
 x5468

News, Notes & Updates



Chris Himes

STEM program manager **Chris Himes** has been appointed to the Education Department faculty as the Jorge Endowed Chair.

Himes specializes in evolutionary biology and science education, as well as examining how science is taught and public understanding of science. In this tenure track position he will focus on science education.

He will also continue his work as the STEM program manager, a position he has held since 2011, which includes integrating STEM outreach and STEM initiatives throughout Berkshire County.

Psychology Professor **Sharon Claffey**, recently presented and moderated a discussion “Student Team-Based Learning: Teaching Students to Teach Themselves” at the National Institute on the Teaching of Psychology (NITOP) held January 3-6 in St. Pete Beach, Fla.

A paper by Physics Professor **Emily Mahar** in the 2014 issue of *Nuclear Instruments and Methods of Physics Research Journal*.

Writes Emily: “This paper, published with the MINERvA collaboration, covers the technical aspects of the detector we use to take our data and the calibrations we must perform to gather useful data.” A link to the article follows: <http://www.sciencedirect.com/science/article/pii/S0168900214000035>.

Art Professor **Melanie Mowinski** presented a paper in Vancouver at the Design Principles and Practices Conference titled “Discovering Design as Collective Intelligence through Designing and Printing Mantra Cards” in January.

Assistant Director of Technology **Gerol Petruzella's** My Dungeons & Discourse game-based curriculum



Alke Groppe-Weggener, artist in residence, led workshops linking art and writing.



Postcard mantras help visualize writing; make one and send it to the Faculty Center

As a follow-up to the first visit of Artist-in-residence Alke Groppe-Weggener last month, the Art Department is inviting faculty to make a postcard, to include in the collection posted in the Faculty Center.

Alke, a Staffordshire University professor (United Kingdom), led workshops for faculty across the disciplines on visualizing concepts and exploring the link between art and writing. She will return to campus in May.

“We made academic mantra cards, with short text that inspires us in our teaching, or advice give to students, and we thought about the goals we have for the rest of the semester,” Alke wrote.

“We decided to take a few minutes each week to reflect on issues pertaining to our teaching and create a postcard to share what we are thinking about on a wall in the Faculty Centre.”

In May the postcards will be assembled in an exhibit at The PRESS, the letterpress galary/workshop on Main Street.

Faculty are invited to participate, even if they didn't attend the January workshops, by contributing their “postcard” thoughts.

News notes continued:



was nominated by a team of digital humanities faculty for inclusion in The MERLOT Project (Multimedia Educational Resources

for Learning and Online Teaching). Math Professor **Duy Nguyen** is featured on the college web site in an article that traces his journey from Vietnam to teaching at MCLA.

“I had a student tell me they were so happy they took my math class, and that it was so helpful for their career. I was very happy that I could be of some help and provide the foundation that

they could move to a higher level to be successful in their later studies.”

Nguyen, who joined MCLA's math department last fall, said his key objective as a college professor is to provide his students with a base on which to build further learning.

Also featured on the college web page is Environmental Science Professor **Dan Shustack**. In January Dan led 10 students in his Environment of South Florida class on a nine-day exploration of Florida's ecosystems and landscapes.

Some of Shustack's photos of the study trip are featured on the next page, and on the “gallery” page of the Faculty Center e-Portfolio site. Check them out.

